

# Forklift Magnetic Sweeper - Defiant Series



www.bluestreakequipment.com



## Magnet Mounted Forklift Magnetic Sweeper

With Quick Clean off Sleeve.



### Needs/Problems for those wanting to use a forklift mounted magnetic sweeper

### Defiant Solutions

#### DEBRIS CAUSING FLAT TIRES

The flat tires on forklifts and other vehicles entering and exiting the property and the resulting costs, interruptions and delays are the problems that in most cases create the need for the use of a magnetic sweeper

- The Defiant was designed specifically to pickup and remove debris such as; nails, screws, wire, discarded pieces from fabrication activities, bolts, nuts, pins, screw drivers, wrenches, etc

#### COST OF CONTINUOUS DEBRIS REMOVAL

Routine removal of metal debris to prevent flat tires represents another activity to be performed and extra labor costs if done separately.

Forklift owners want a solution that solves the flat tire problem without adding more permanently ongoing labor costs to do so.

- By mounting the Defiant on forklifts, clean up of metal debris occurs as other normal activities are carried out. It results in negligible extra labor costs to solve the problem of flat tires.

- By eliminating the current and future labor costs of solving the flat tire problem, the payback period of investing in the Defiant is greatly reduced.

- The Defiant pays for itself very quickly.

# Forklift Magnetic Sweeper - Defiant Series



## Needs/Problems for those wanting to use a forklift mounted magnetic sweeper

### **FORKLIFT FIT**

Forklift owners and operators don't want to have to fabricate a custom installation for their forklift that damages the forklift in the process of installing the magnet.

They want a magnetic sweeper solution that is easy to install out of the box, that fits almost every type of forklift on the market, and that is compact in size to minimize the overall length it adds to the forklift in order to maintain forklift maneuverability.

## Defiant Solutions

- The Defiant was designed to fit every brand and size of forklift on the market right out of the box.
- No need to weld on or drill into your forklift to mount the Defiant.
- Designed to be completely concealed under your forklift where it cannot get damaged.
- The Defiant easily mounts to the underside of your forklift with rare earth magnet quad pods designed to swivel to attach to any flat metal surface.
- Four quad pods for quick and heavy duty mounting to the underbody or chassis. Each quad pod (four magnets each) holds 52Lbs on clean steel. With four total quad pods (208lbs holding force) keeping the roughly 25lbs Defiant on your forklift there is plenty of holding power.
- Easy height adjustability (with self tightening cord cleats)
- The Defiant is easy to install and setup on any forklift in just a few minutes.





# Forklift Magnetic Sweeper - Defiant Series



## Needs/Problems for those wanting to use a forklift mounted magnetic sweeper

## Defiant Solutions

### EASE OF USE

Forklift operators want an easy way of adjusting magnet sweeping height to fine tune the height for their job site.

- Adjusting the magnet sweeping height on the Defiant is easy with just a pull of the polyester paracord with self tightening cord cleat.

### PROFESSIONAL PERFORMANCE AND POWER

Commercial and industrial Forklift owners and users want a magnetic sweeper that's going to work in tough dirty conditions to ensure removal of unwanted metal debris.

We know industrial and commercial users don't want to buy something that only half works.

- The Defiant is a permanently charged rare earth magnet, power will never decrease, ensuring years of use.

- The Defiant will pick up a 2 1/2" nail when the bottom of the magnet is 4" off the ground providing plenty of pickup power performance when operating on moving forklifts. To maximize performance we recommend setting sweeping height between 1 and 2 inches.

### DURABILITY

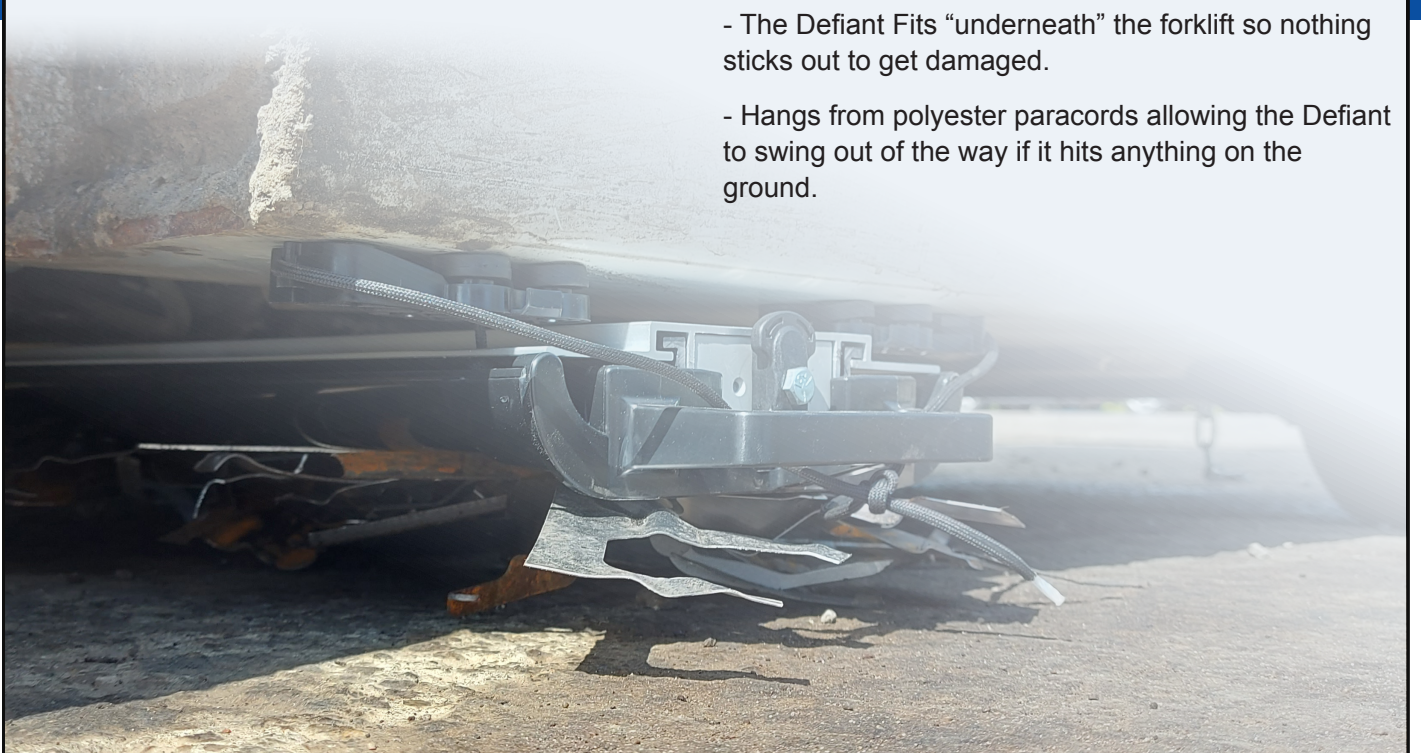
Not only does it have to work, and be easy to use, but industrial and commercial forklift owners and users want a forklift magnet that will last as long as the forklift.

- Permanently charged rare earth magnet that will never need to be recharged.

- Durable aluminum magnet housing construction and heavy duty PVC quick clean off sleeve resists abrasion if the ground is struck.

- The Defiant Fits "underneath" the forklift so nothing sticks out to get damaged.

- Hangs from polyester paracords allowing the Defiant to swing out of the way if it hits anything on the ground.



# Defiant Specifications

See this product in action.  
View demo on line.  
Visit us at [www.bluestreakequipment.com](http://www.bluestreakequipment.com)

---

## Product Name

Defiant - Forklift Magnetic Sweeper

---

## Sweeper Width

Defiant 36" or 42"

---

## Magnet Dimensions Inside Housing (unspaced)

Defiant - 36 - 2" W x 0.5" H x 36" L

Defiant - 42 - 2" W x 0.5" H x 42" L

---

## Total Product Weight

Defiant 36 - 23.1 lbs

Defiant 42 - 26.4 lbs

---

## Total Shipping Weight

Defiant 36 - 26.4 lbs

Defiant 42 - 29.7 lbs

---

## Cleaning Method

Included quick clean off sleeve.

---

## Sweeping Height Adjustability

Yes, by adjusting polyester paracord with self tightening cord cleat.

---

## Mounting Type

Magnet mounted

---

## Mounting Point

Under forklift or from other steel surface.

---

## Magnet Type

Permanently Charged rare earth magnets.  
Rare earth pot magnets.

---

## Forklift Fit

Designed to fit all forklifts.

---

## Maximum Lifting Height

(measures in 2 1/2" 8 penny nails)

4" inches

---

## Construction

- Polyester paracord
- Aluminum housing
- Nylon & PVC injection molder parts



1645 Hwy 3, Delhi,  
Ontario, Canada N4B 2W6  
Tel:1-519-582-1386

email: [sales@bluestreakequipment.com](mailto:sales@bluestreakequipment.com)  
web site: [www.bluestreakequipment.com](http://www.bluestreakequipment.com)

\*The manufacturer reserves the right to modify the product at any time, without prior notice.